



Profit pressure gauges type PG/0-25bar/FM are gauges designed and approved for use in fire sprinkler pipe systems & HVAC. The model is based on the proven Bourdon tube measuring system.

#### Characteristics

- Can be used for medium water or air.
- Suitable for indoor and outdoor use, protection class IP44.
- Pressure element: bourdon tube in copper alloy.
- Corrosion resistant casing.
- Dual scale 0-25 bar/ 0-360 psi.
- Including pointer stop pin.
- FM approved (WIKA 111.10.100).
- Accuracy class: class 1.6.

#### Pressure limitations

- Steady: 3/4 of full scale.
- Fluctuating: 2/3 of full scale.
- Short time: full scale value.

#### Working temperature

- Ambient: -20°C to +60°C
- Medium: maximum +60°C

#### Approvals

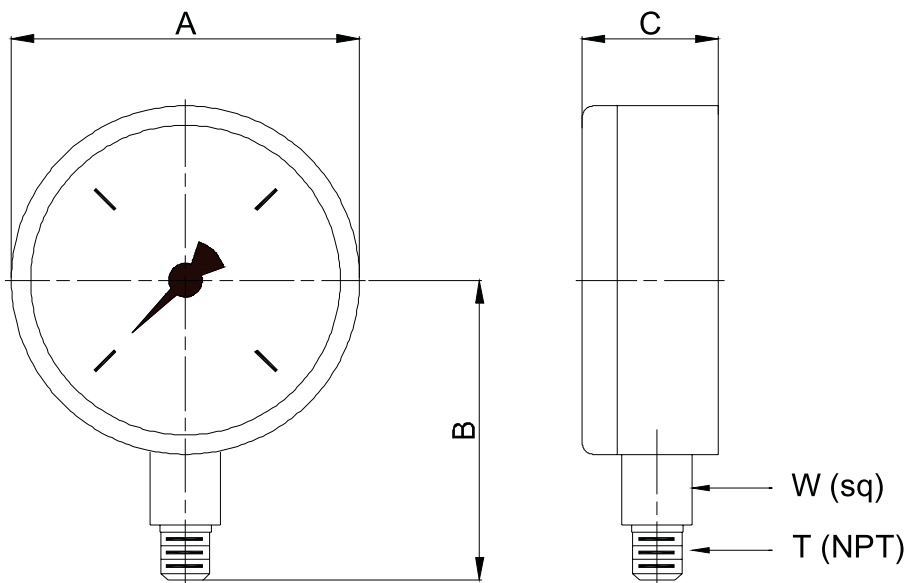
- FM approved

#### Material specifications

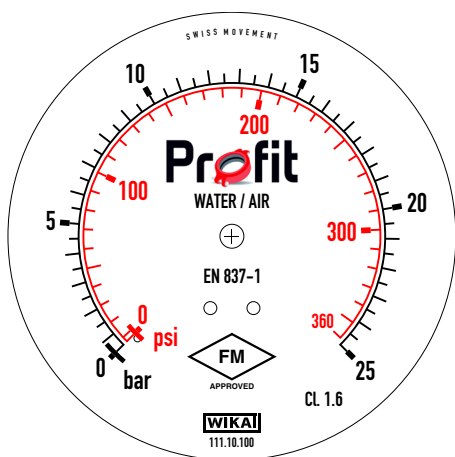
Part	Material
Case	Plastic, black
Bottom connection (EN 837-1/7.3)	Copper alloy
Pressure element	Copper alloy, C-type
Dial	Aluminium, white
Pointer	Plastic, black
Case	Plastic, black
Window	Plastic, crystal clear

## Dimensions

Dimensions (mm/inch)					
Size	A	B	C	W	T
100	99	83,5	30,5	14x14	1/4" Npt



## Marking





### Storage and handling

- Upon receipt, carefully check completely the gauge on any damage during shipment.
- Pressure gauges must be stored indoor, protected from moist.
- This is a precision measuring device, please handle with care, avoid shocks at all times.



### Installation

1. Please use appropriate sealing material on the thread.
2. Do not use the housing to apply torque when mounting the gauge, only torque the metal square bottom-connector with suitable tool.

### Application example: Profit wet alarm valves FACV & GACV



## GENERAL INFO

- Installers should be trained or experienced to install and understand the product.
- Read and understand all technical datasheets and installation instructions before attempting to install, remove or adjust any Profit piping products.
- Depressurize and drain the sprinkler installation system before attempting to install, remove or adjust any Profit Piping products.
- Never work on piping-systems that are pressurized and /or filled with water.
- Use the necessary Personal Protection Equipment (PPE) to avoid personal injury (helmet, safety shoes and goggles, Profit gloves).



Failure to follow these instructions could result in death or serious injury and property damage.

We advise to always store our products in closed and dry environments, the products do not need any specific maintenance once installed on an aboveground sprinkler installation.

## REVISION TABLE

Date	△	Notes